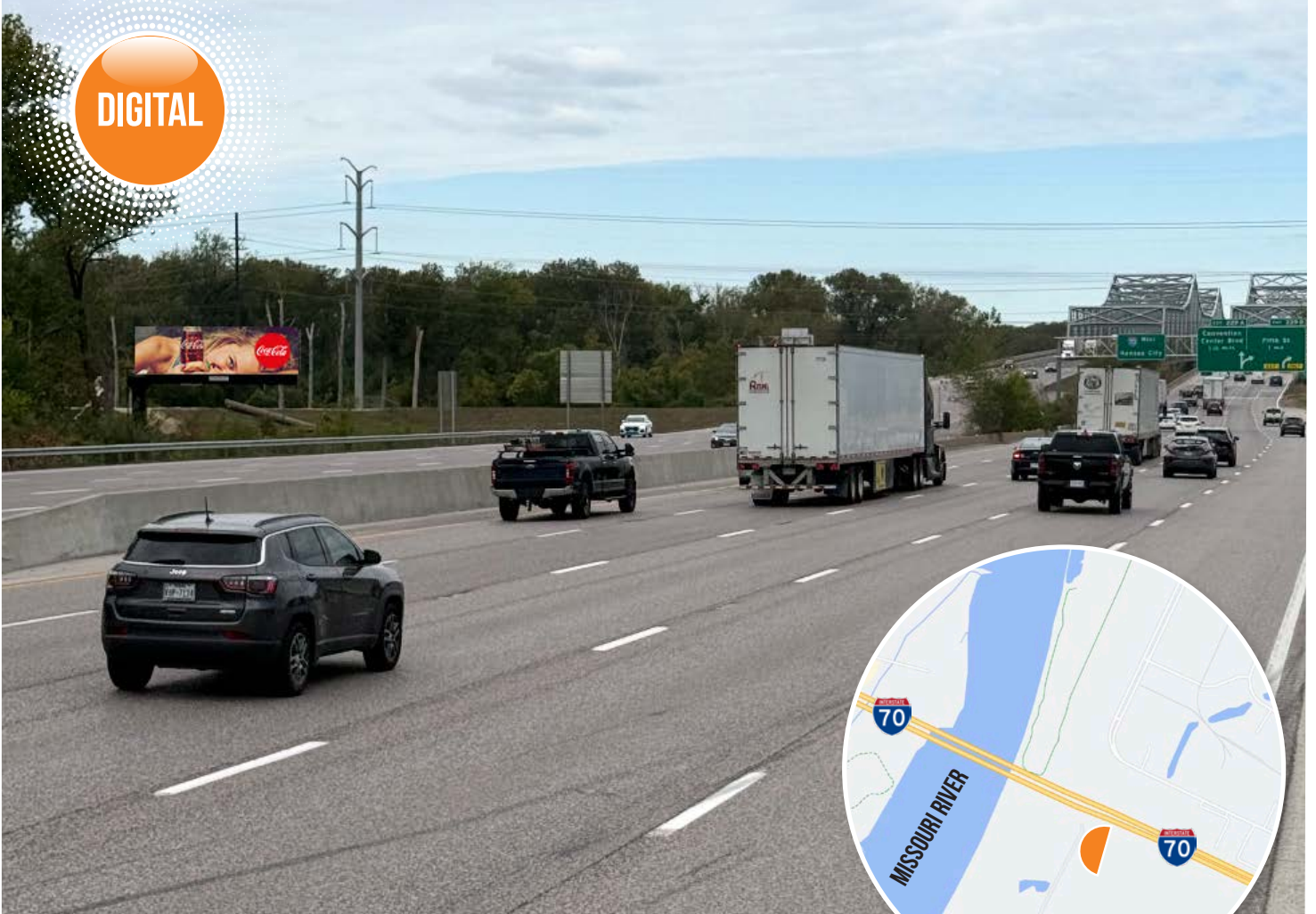


DIGITAL



Positioned to capture all westbound I-70 traffic crossing the Missouri River, this spectacular cross-read delivers long, unobstructed visibility as vehicles descend from the bridge approach into Maryland Heights. Drivers naturally slow as the bridge levels out — providing extended dwell time and a perfect sightline for high-impact creative.

Whether commuters are returning home to St. Charles County, heading toward the airport, or connecting to I-270 and I-64, this board commands attention from a core suburban commuter audience and regional travelers alike.

PANEL NO:	MO-10/B
MARKET:	St Louis
COMMUNITY:	Riverport
SIZE:	14'H x 48'W
LAT/LONG:	38.761137, -90.476080
FACING:	Southeast
*IMPRESSIONS:	142,176
TAB ID:	30903554
TYPE:	DIGITAL
ILLUMINATION:	YES

**Impressions values are weekly based on Adults 18+.*