



10 TIMES SQUARE, MANHATTAN

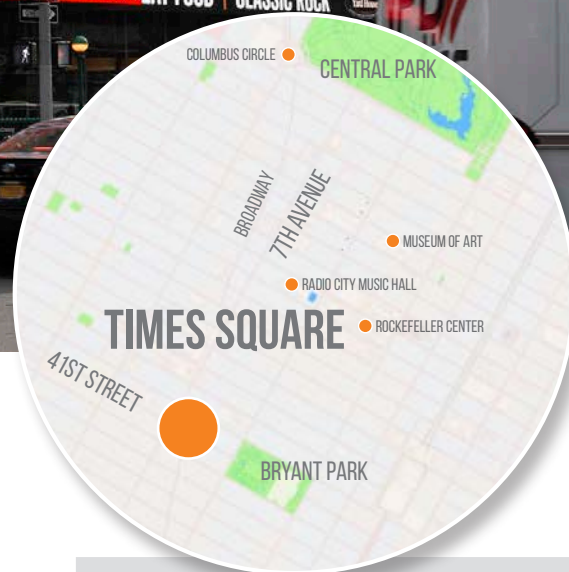
FOXPOINT

NEW YORK



TIMES SQUARE EXPOSURE WITHOUT THE CLUTTER

Located in the south end of Times Square's bow tie, this new landmark digital is in a prime location reaching visitors & local commuters. Centrally located between Bryant Park and the Port Authority bus hub this corner display is in the middle of a revitalized retail and dining destination and just outside of the clutter of the over-saturated core of Times Square.



PANEL NO: NY-02

MARKET: New York

COMMUNITY: Times Square

SIZE: 20'H x 67"W

LAT/LONG: 40.7551, -73.9871

FACING: North/East

*IMPRESSIONS: 812,745

TAB ID: 30984126

TYPE: Full Motion Digital

ILLUMINATION: 22hrs

**Impressions values are weekly based on Adults 18+.*

30-15 THOMSON AVE LONG ISLAND CITY, QUEENS

NEW YORK



KING OF THE HILL IN QUEENS

14'x48' bulletin in Queens, New York with long approach views catching commuters going to and from Manhattan. This high profile, two-sided bulletin reads to traffic on Thomson Avenue with secondary reads on Skillman Avenue. Queens is on Long Island across the East River from Manhattan. Queens is host of the annual U.S. Open tennis tournament and nearby Citi Field where the MLB NY Mets play.



PANEL NO: NY-03a

MARKET: New York

COMMUNITY: Queens

SIZE: 14'H x 48'W

LAT/LONG: 40.745370, -73.938230

FACING: West

*IMPRESSIONS: 311,000

TAB ID: Pending

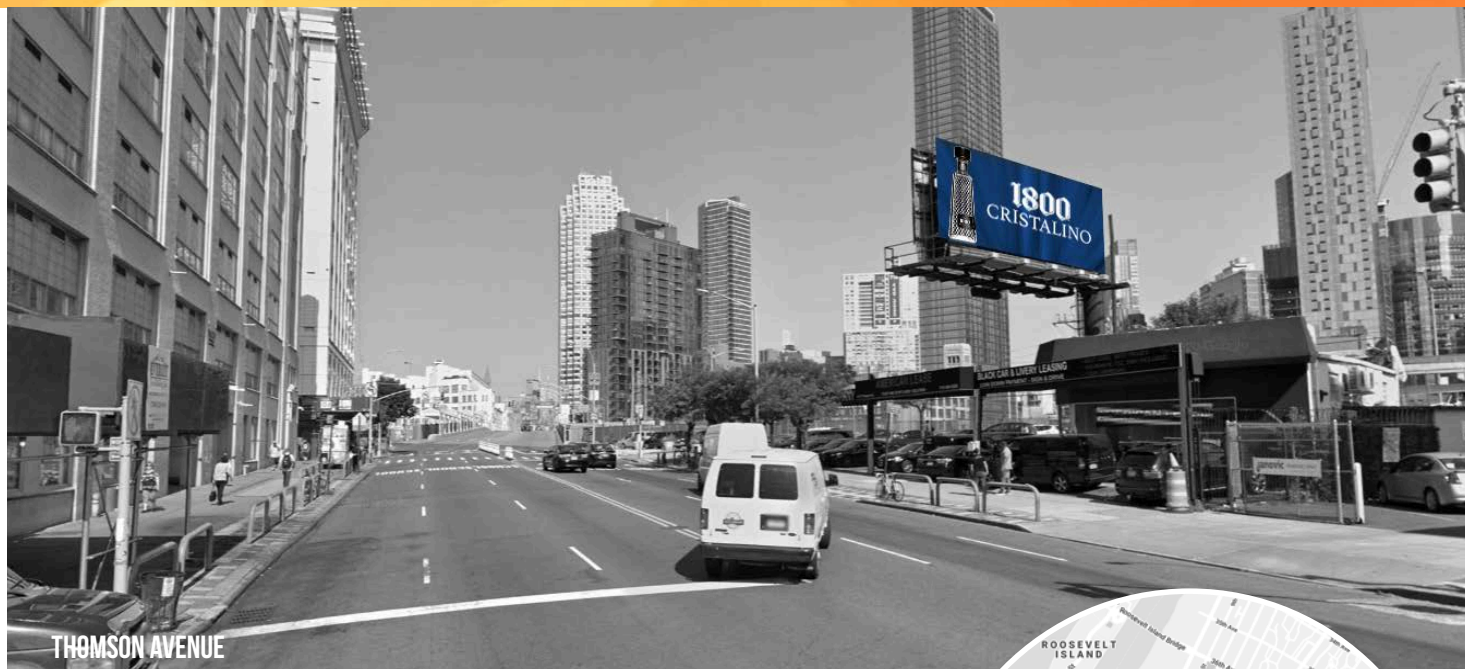
TYPE: Static

ILLUMINATION: 18hrs

**Impressions values are weekly based on Adults 18+.*

30-15 THOMSON AVE LONG ISLAND CITY, QUEENS

NEW YORK



THOMSON AVENUE

KING OF THE HILL IN QUEENS

14'x48' bulletin in Queens, New York with long approach views catching commuters going to and from Manhattan. This high profile, two-sided bulletin reads to traffic on Thomson Avenue with secondary reads on Skillman Avenue. Queens is on Long Island across the East River from Manhattan. Queens is host of the annual U.S. Open tennis tournament and nearby Citi Field where the MLB NY Mets play.



SKILLMAN AVENUE

PANEL NO: NY-03b

MARKET: New York

COMMUNITY: Queens

SIZE: 14'H x 48'W

LAT/LONG: 40.745370, -73.938230

FACING: East

*IMPRESSIONS: Pending

TAB ID: Pending

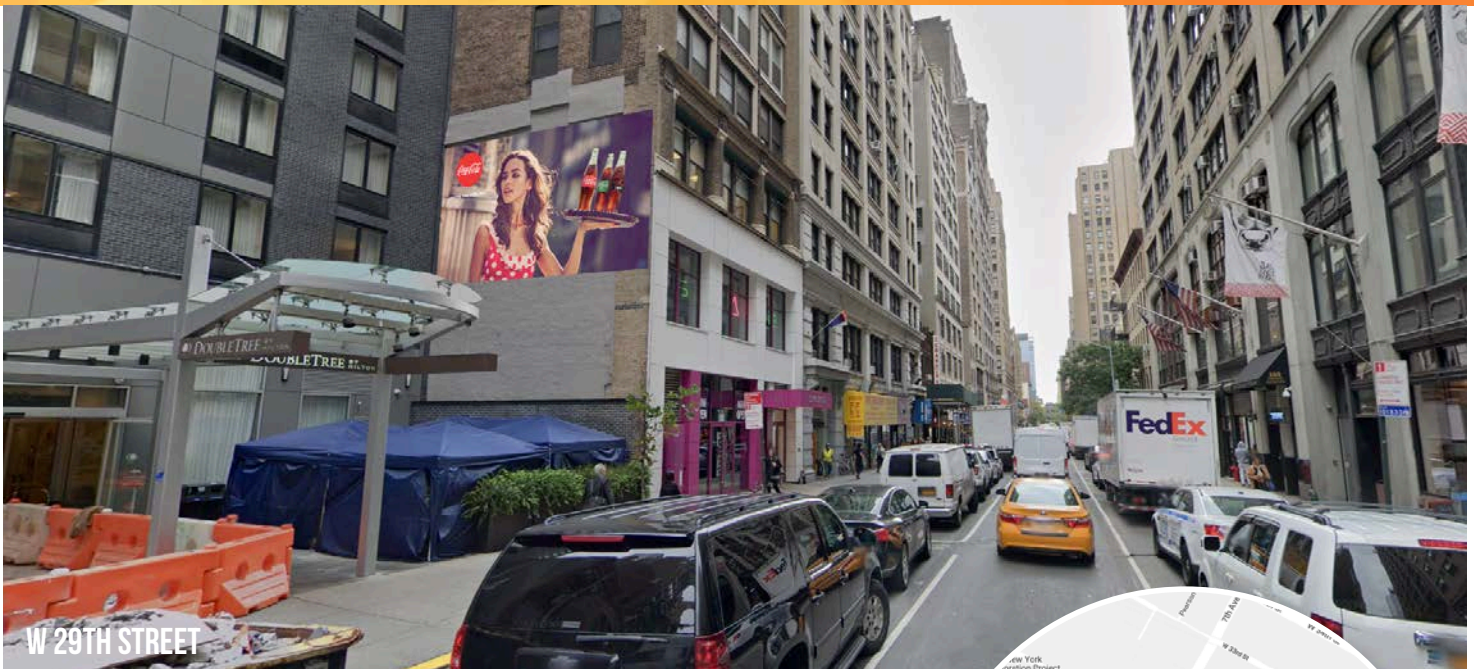
TYPE: Static

ILLUMINATION: 18hrs

**Impressions values are weekly based on Adults 18+.*

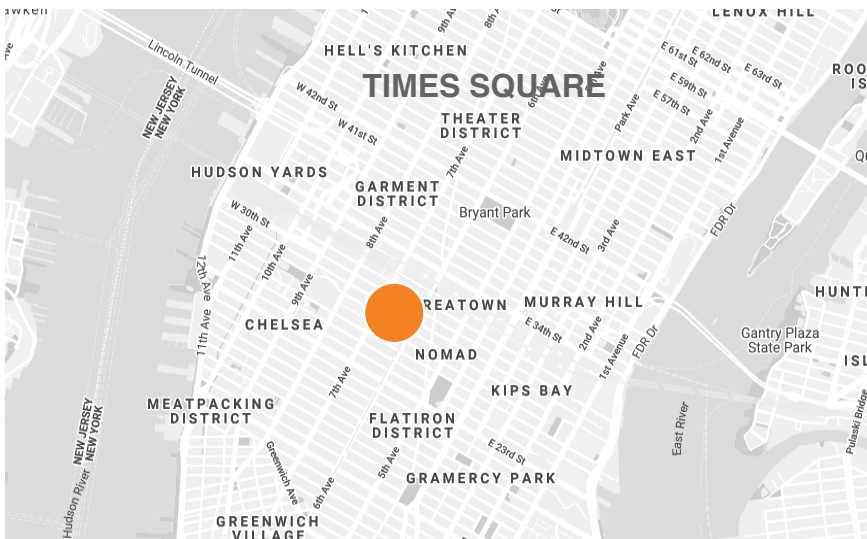
130 WEST 29TH STREET MANHATTAN

NEW YORK



WALLSCAPE IN CENTRAL MANHATTAN

14' x 25' wall in Manhattan. Located centrally just south of Times Square and between Penn Station and the Empire State Building this wallscape captures oneway pedestrian and vehicular traffic heading northwest on west 29th Street between 6th and 7th Avenues.



PANEL NO: NY-04

MARKET: New York

COMMUNITY: Manhattan

SIZE: 14'H x 25'W

LAT/LONG: 40.74713, -73.99142

FACING: Southeast

*IMPRESSIONS: 393,759

GEOPATH ID: 31025656

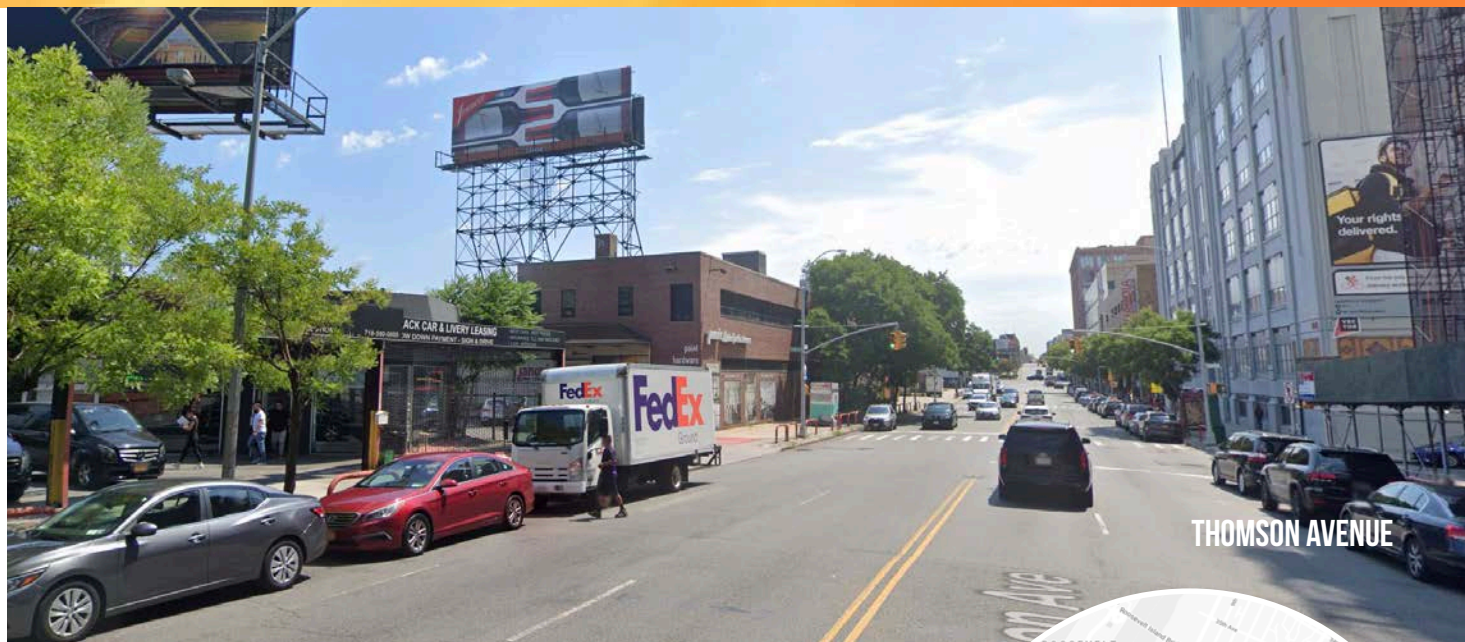
TYPE: Static

ILLUMINATION: No

**Impressions values are based on 4 weeks/Adults 18+.*

30-35 THOMPSON AVE. LONG ISLAND CITY, NY 11101

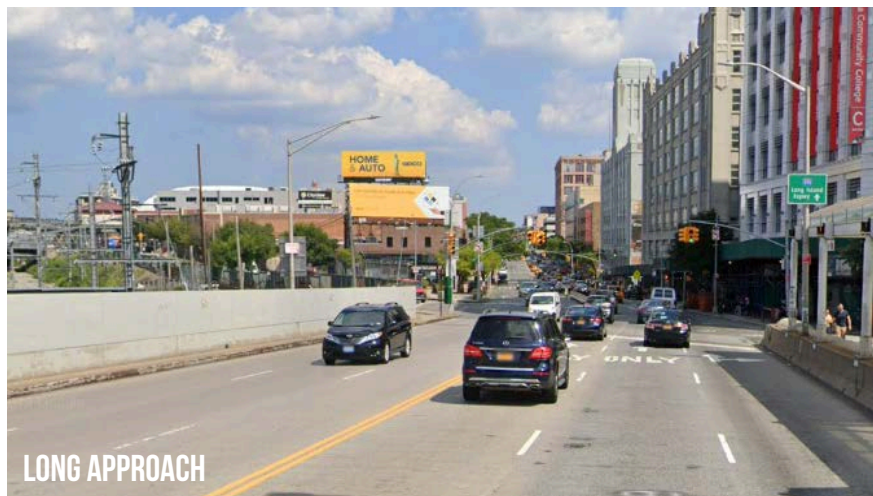
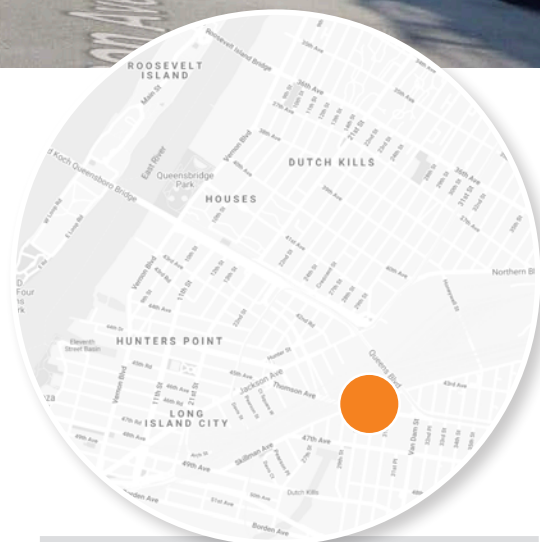
NEW YORK



THOMPSON AVENUE

TALL STRUCTURE WITH LONG APPROACH

14'x48' bulletin in Queens with long approach views. This high-profile bulletin targets traffic exiting Manhattan over the Queensboro/59th Street Bridge. One of the most heavily-trafficked bridges in all of New York, the toll-free Queensboro Bridge is a popular alternate to the Midtown Tunnel, connecting Midtown East Manhattan and the Long Island Expy and Queens Boulevard in Queens. Foxpoint also operates the sign directly in front of this display making this environment a perfect opportunity for a domination campaign.



LONG APPROACH

PANEL NO: NY-05A

MARKET: New York

COMMUNITY: Queens

SIZE: 14'H x 48'W

LAT/LONG: 40.745355, -73.936269

FACING: West

*IMPRESSIONS: 222,028

GEOPATH ID: 514969

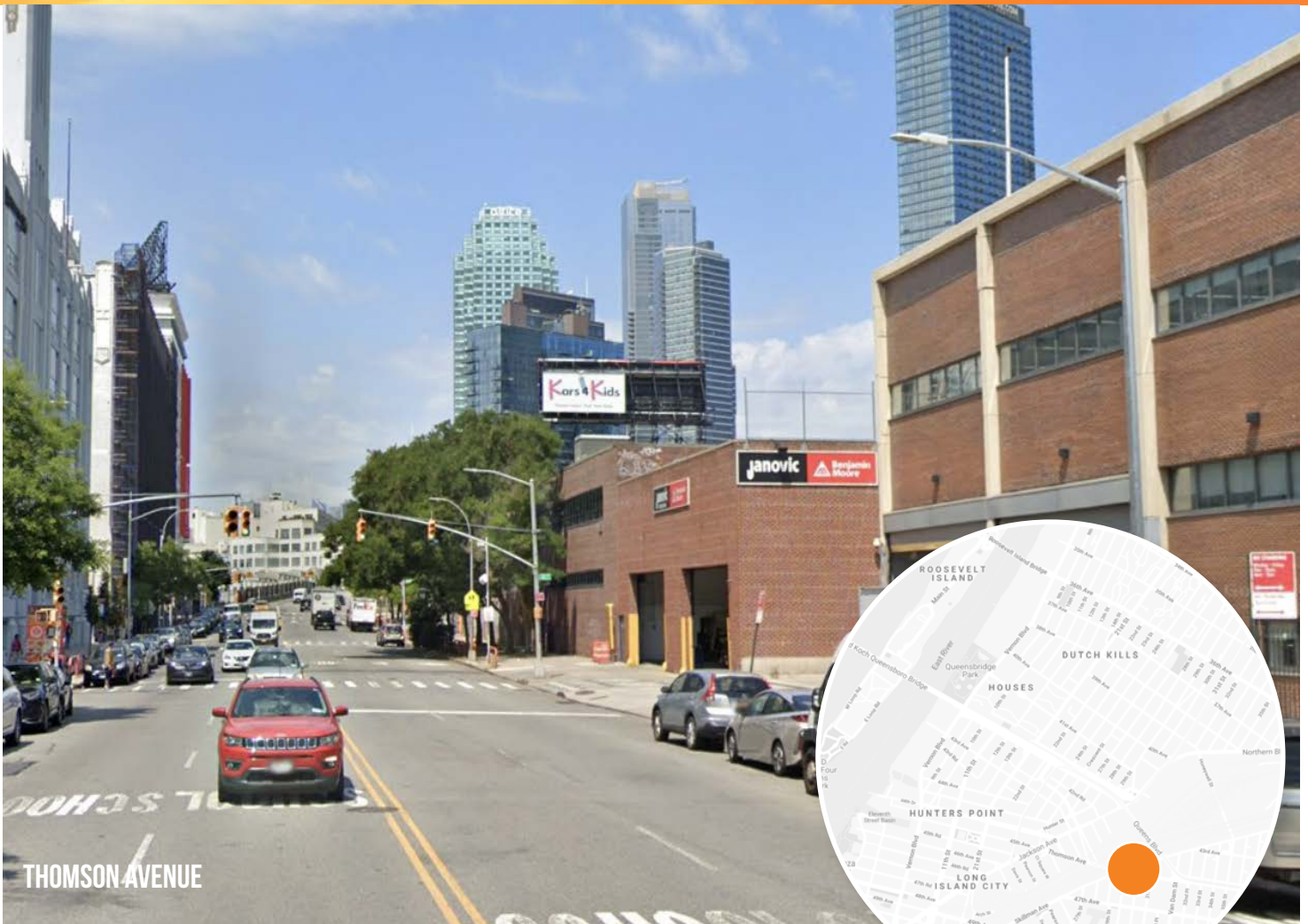
TYPE: Static

ILLUMINATION: Yes

**Impressions values are weekly based on Adults 18+.*

30-35 THOMPSON AVE. LONG ISLAND CITY, NY 11101

NEW YORK



THOMPSON AVENUE

QUEENS POSTER WITH HIGH IMPRESSIONS

This poster is located directly outside Briarcliffe College and can be seen by motorists and pedestrians traveling along Thompson Ave. Also close by is LaGuardia Community College and Bard High School.

PANEL NO: NY-05B

MARKET: New York

COMMUNITY: Queens

SIZE: 10'6"H x 22'9"W

LAT/LONG: 40.74456, -73.93622

FACING: East

*IMPRESSIONS: 140,983

GEOPATH ID: 480697

TYPE: Static

ILLUMINATION: Yes

**Impressions values are weekly based on Adults 18+.*