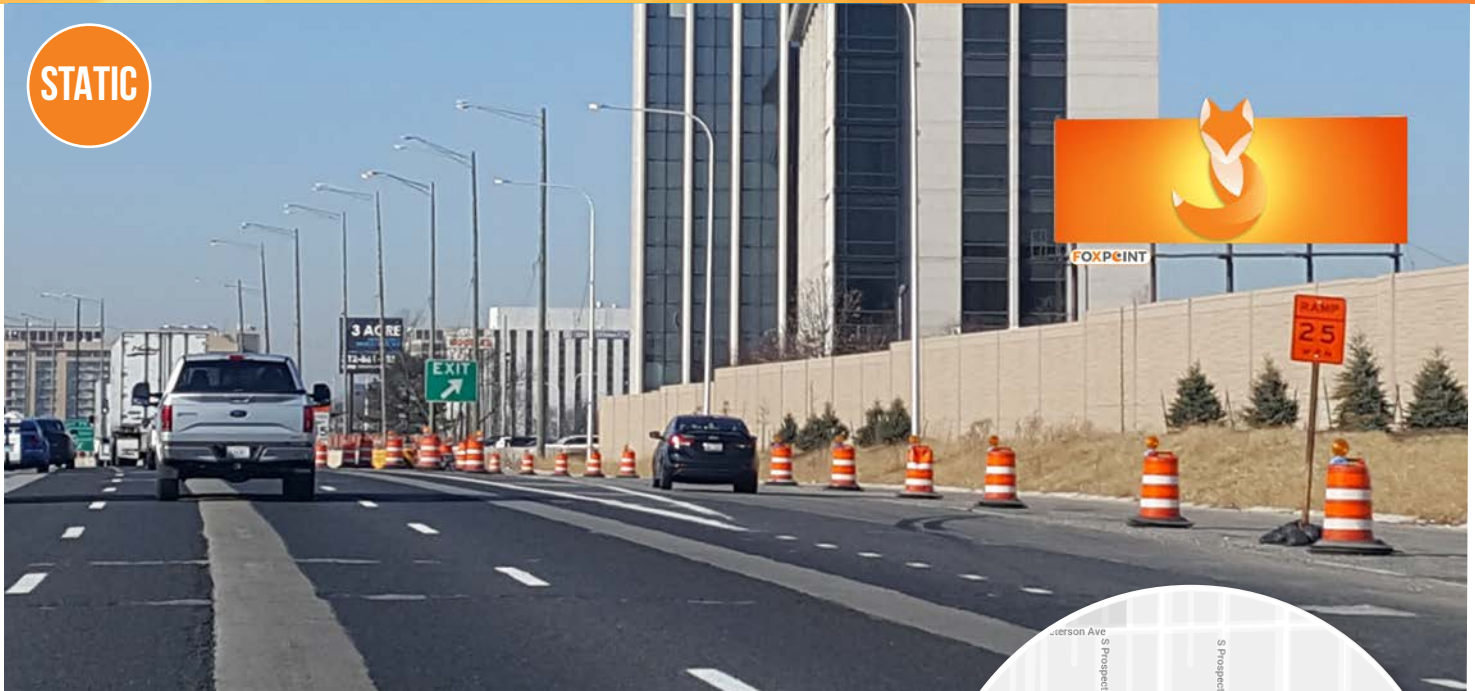


8101 W. HIGGINS RD & KENNEDY EXPRESSWAY

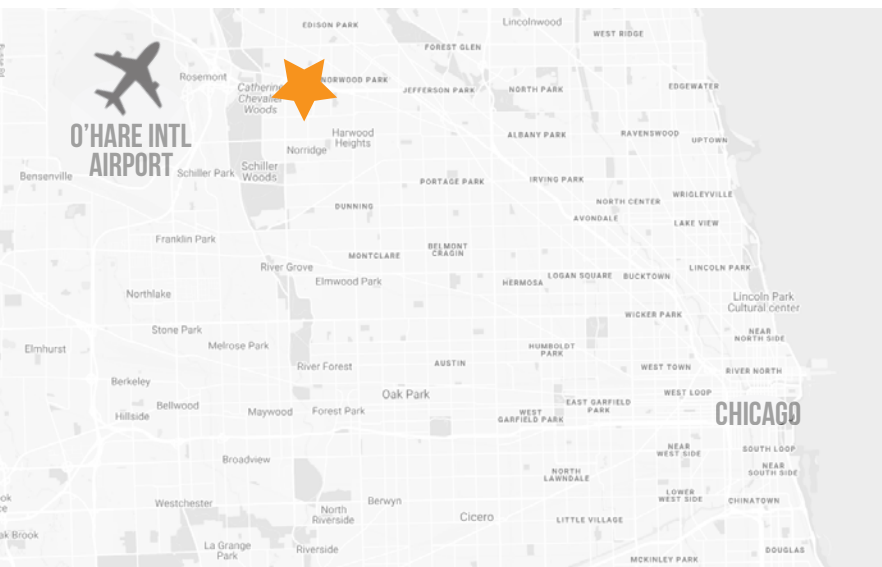
CHICAGO

STATIC



KENNEDY EXPRESSWAY/O'HARE INTL AIRPORT

This one-sided static bulletin is primed to be an instant landmark in the Chicago market. The display sits high above the I-90, Kennedy Expressway and reaches traffic headed into O'Hare International Airport. This air travel hub serves nearly 85 million passengers annually.



PANEL NO: IL-101

MARKET: Chicago

COMMUNITY: O'Hare Airport

SIZE: 16'7"H x 48'0"W

LAT/LONG: 41.98506, -87.82877

FACING: Southeast

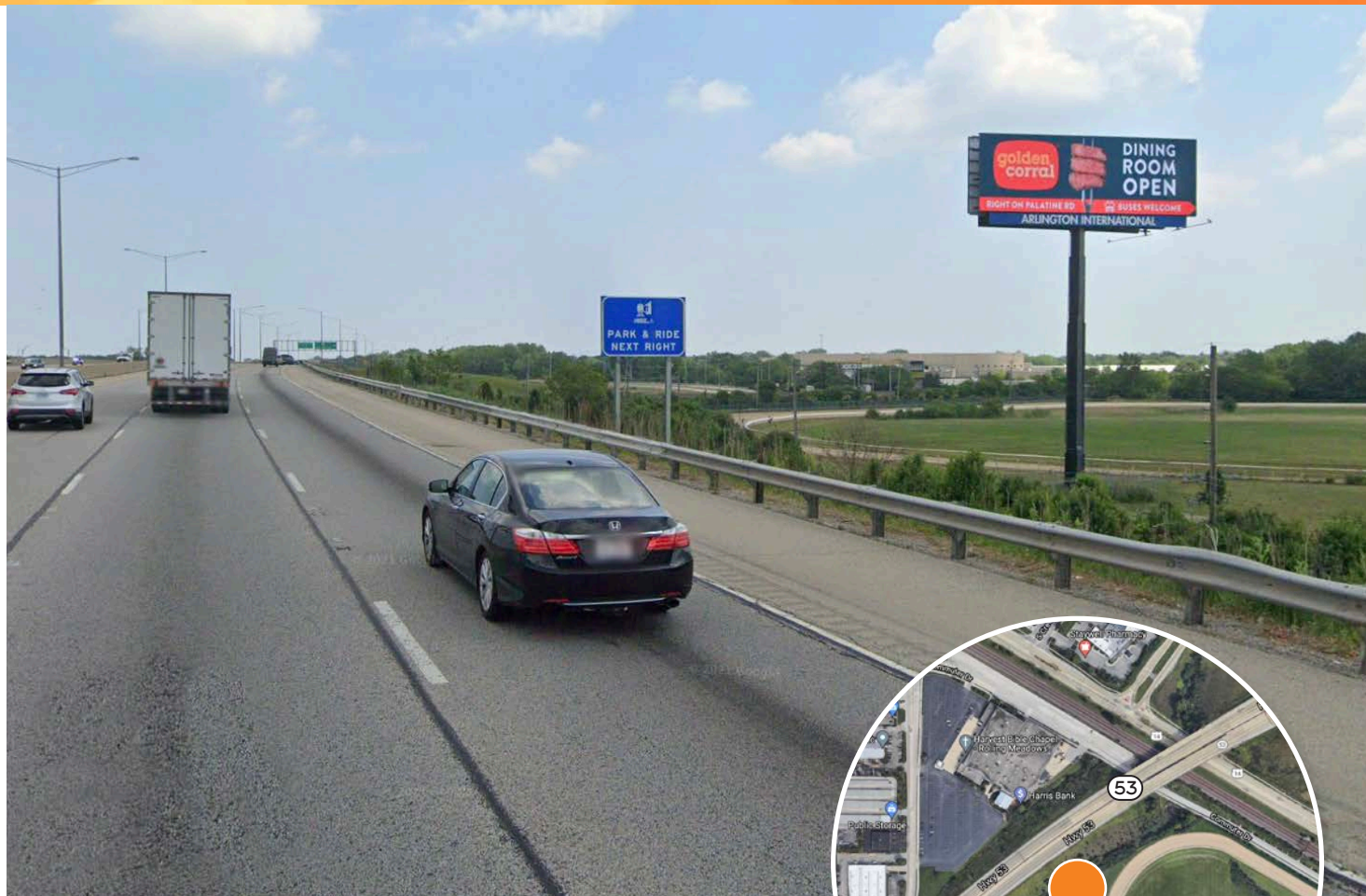
*IMPRESSIONS: 730,338

TAB ID: 31021933

TYPE: Static

ILLUMINATION: 24hrs

**Impressions values are weekly based on Adults 18+.*



ARLINGTON HEIGHTS GIANT!

Located on Illinois Route 53, half a mile North of Euclid Avenue, this board targets commuters headed to affluent communities in Chicago's northwest suburbs including Arlington Heights, Palatine, Barrington and Schaumburg. Standing at 90 feet tall, this 20'x60' digital display is two-sided reaching motorists traveling North and South and rises above all other OOH displays in the area.

PANEL NO:	IL-102A
MARKET:	Chicago
COMMUNITY:	Arlington Heights
SIZE:	20'H x 60'W
LAT/LONG:	42.09854, -88.02264
FACING:	Southwest
*IMPRESSIONS:	300,604
GEOGRAPH ID:	30833076
TYPE:	DIGITAL
ILLUMINATION:	18hrs

**Impressions values are weekly based on Adults 18+.*



ARLINGTON HEIGHTS GIANT!

Located on Illinois Route 53, half a mile North of Euclid Avenue, this board targets commuters headed to affluent communities in Chicago's northwest suburbs including Arlington Heights, Palatine, Barrington and Schaumburg. Standing at 90 feet tall, this 20'x60' digital display is two-sided reaching motorists traveling North and South and rises above all other OOH displays in the area.

PANEL NO:	IL-102B
MARKET:	Chicago
COMMUNITY:	Arlington Heights
SIZE:	20'H x 60'W
LAT/LONG:	42.09854, -88.02264
FACING:	Northeast
*IMPRESSIONS:	346,256
GEOGRAPH ID:	30833075
TYPE:	DIGITAL
ILLUMINATION:	18hrs

**Impressions values are weekly based on Adults 18+.*

S/L ROOSEVELT ROAD E/O 1-294

CHICAGO



CHICAGO SUBURB

One of Chicago's trendiest neighborhoods just a few miles northwest of downtown Chicago. Bordered by the Chicago River on the east and the Kennedy Expressway (I-94) to the south. The neighborhood is filled with shopping, dining and entertainment.



PANEL NO:	IL-166A
MARKET:	Chicago
COMMUNITY:	West Suburb
SIZE:	(2) 10'6"H x 36'W
LAT/LONG:	41.8621, -87.9162
FACING:	West
*IMPRESSIONS:	71,143
TAB ID:	30568378
TYPE:	Static
ILLUMINATION:	18hrs

**Impressions values are weekly based on Adults 18+.*

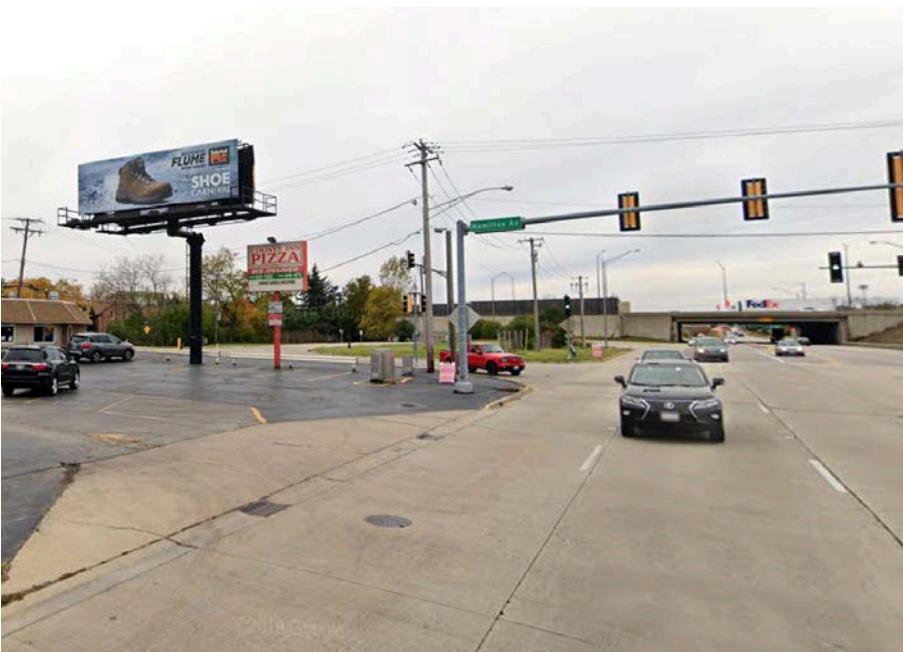
STATIC

B



CHICAGO SUBURB

One of Chicago's trendiest neighborhoods just a few miles northwest of downtown Chicago. Bordered by the Chicago River on the east and the Kennedy Expressway (I-94) to the south. The neighborhood is filled with shopping, dining and entertainment.



PANEL NO: IL-166A/166B

MARKET: Chicago

COMMUNITY: West Suburb

SIZE: (2) 10'6" H x 36' W

LAT/LONG: 41.8621, -87.9162

FACING: East

*IMPRESSIONS: 59,023

TAB ID: 30568377

TYPE: Static

ILLUMINATION: 18hrs

**Impressions values are weekly based on Adults 18+.*